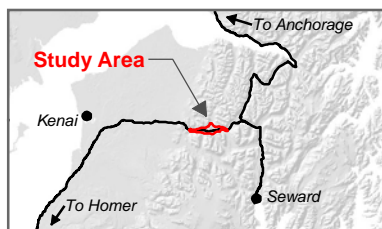
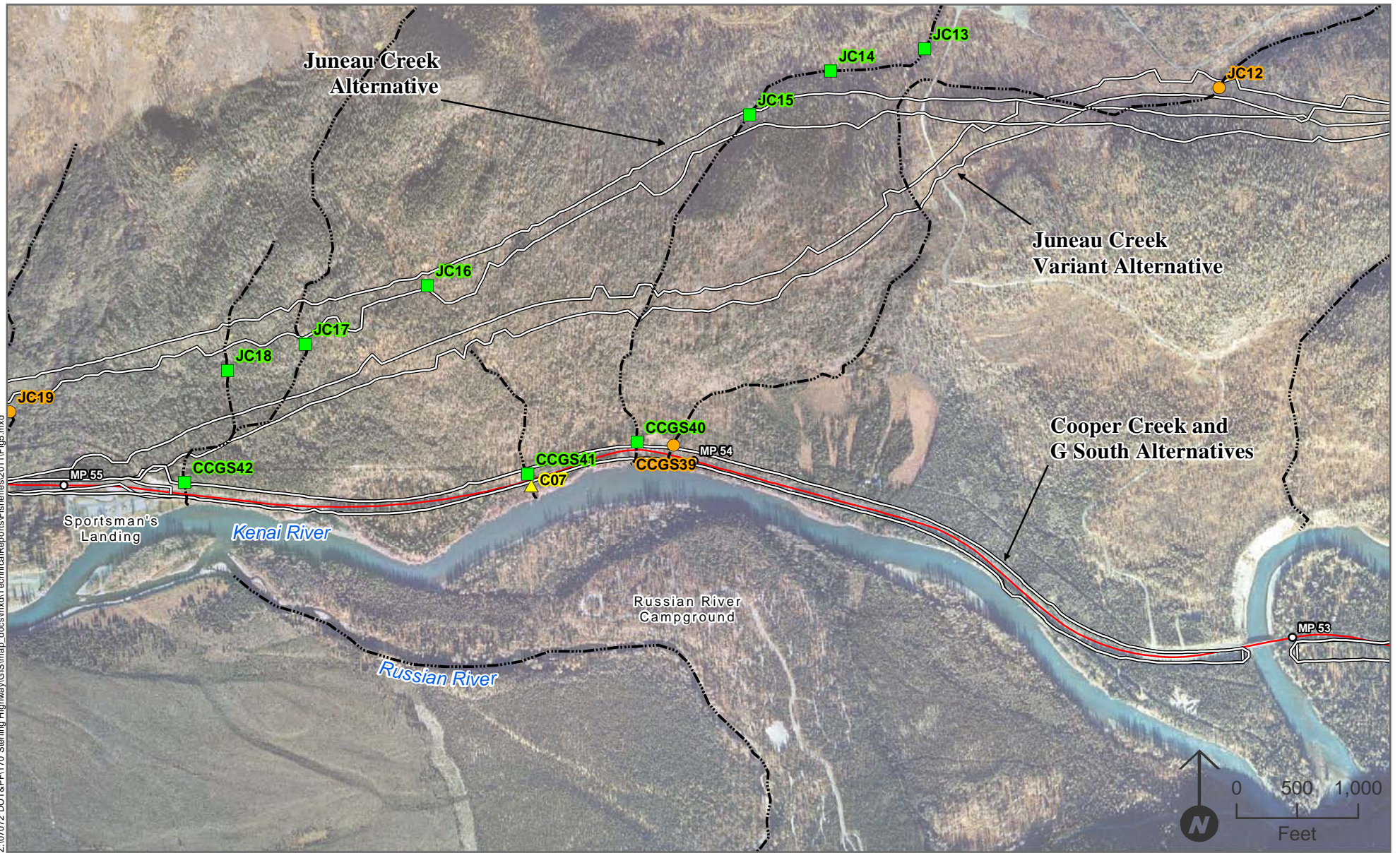


Z:\07072 DOT&P\F170 Sterling Highway\GIS\map_docs\mxd\TechnicalReports\Fisheries\2011\Fig5.mxd



- Sample Sites**
- 2004 Event
 - ▲ 2005 Event
 - 2004 and 2005 Event
 - Cut and Fill Limits
- Approximate location of stream or drainage** (dashed line)
- Sterling Highway** (red line)
- Approximate Milepost** (circle)

Sterling Highway MP 45 to 60 Project
 STP-F-021-2(15)/53014
 March 2011

Figure 5