



Welcome!

Sterling Highway Milepost 45-60 Project Public Meeting

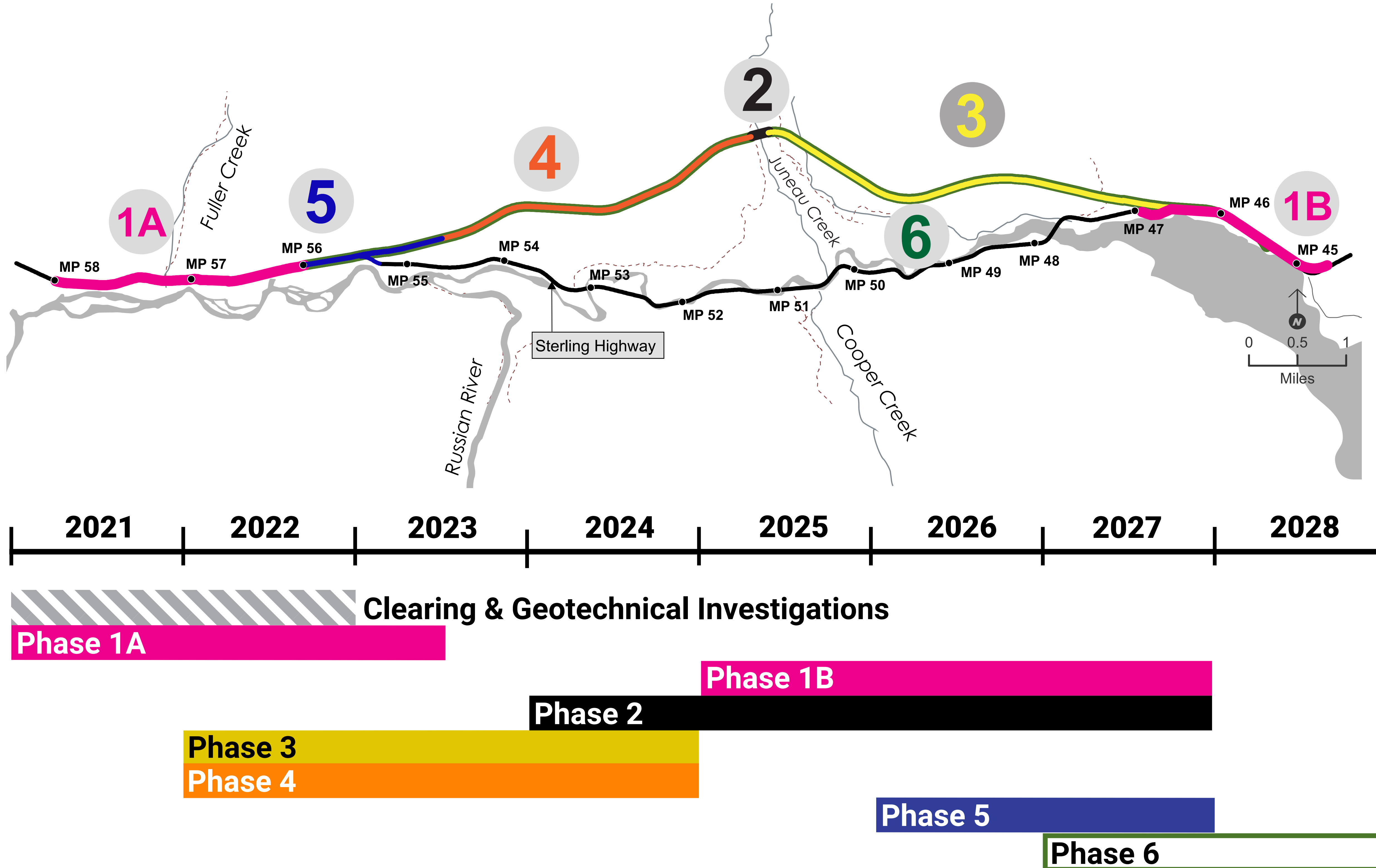


Meeting Purpose

To share new information regarding the project design and discuss the project's next steps.



Project Schedule & Funding



- » The 2024–2027 Statewide Transportation Improvement Program (STIP) designated funding for the Sterling Highway Milepost (MP) 45–60 Project.
 - The project is now slated to be completed in 2028 due to the updated funding.
- » The STIP guides efforts to maintain, enhance, and expand Alaska’s transportation system. It is a comprehensive document that outlines transportation programs and projects scheduled for implementation over a 4-year period. These initiatives encompass a wide range of activities, including highway improvements, bridge repairs, waterways projects, public transportation enhancements, and more.
- » The project has received funding for the Juneau Creek Bridge, and the proposed 2024–2027 STIP will show funding for Phases 1B, 5, and 6 in 2025, 2026, and 2027 as depicted in the graphic.

West End (Phase 1A)



Looking east along the newly completed Sterling Highway Phase 1A.



Newly completed Sterling Highway with Fuller Creek stream realignment.



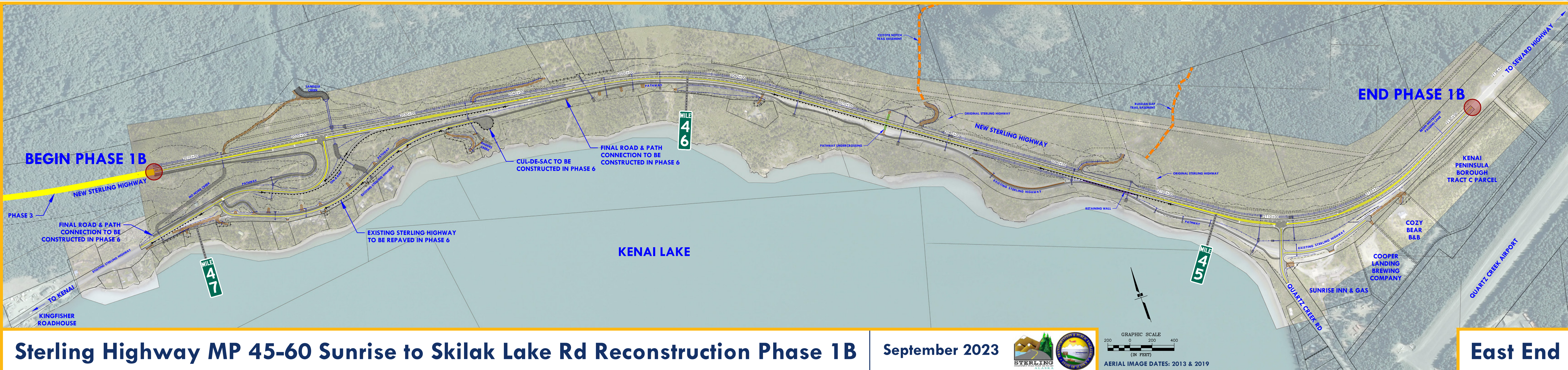
Inlet of Fuller Creek Wildlife and Fish Passage Crossing with wildlife fencing.



Inside Fuller Creek Wildlife and Fish Passage Crossing.

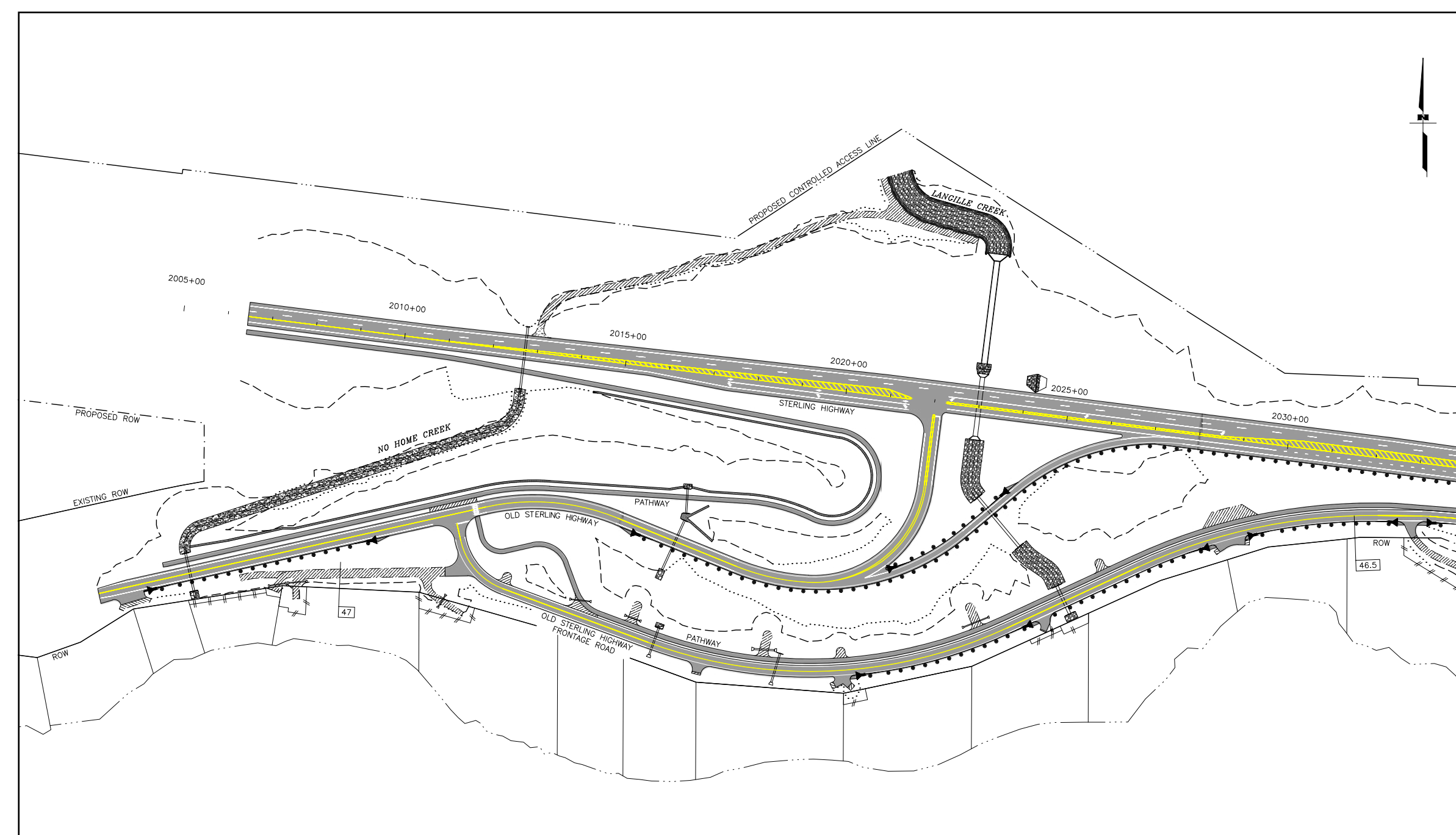
- » Phase 1A construction was completed in July 2023.
 - This included the MP 56.3 wildlife crossing and the Fuller Creek wildlife and fish passage crossing.
- » MP 57 and 58 erosion repair is tentative for spring 2024.

East End (Phase 1B)

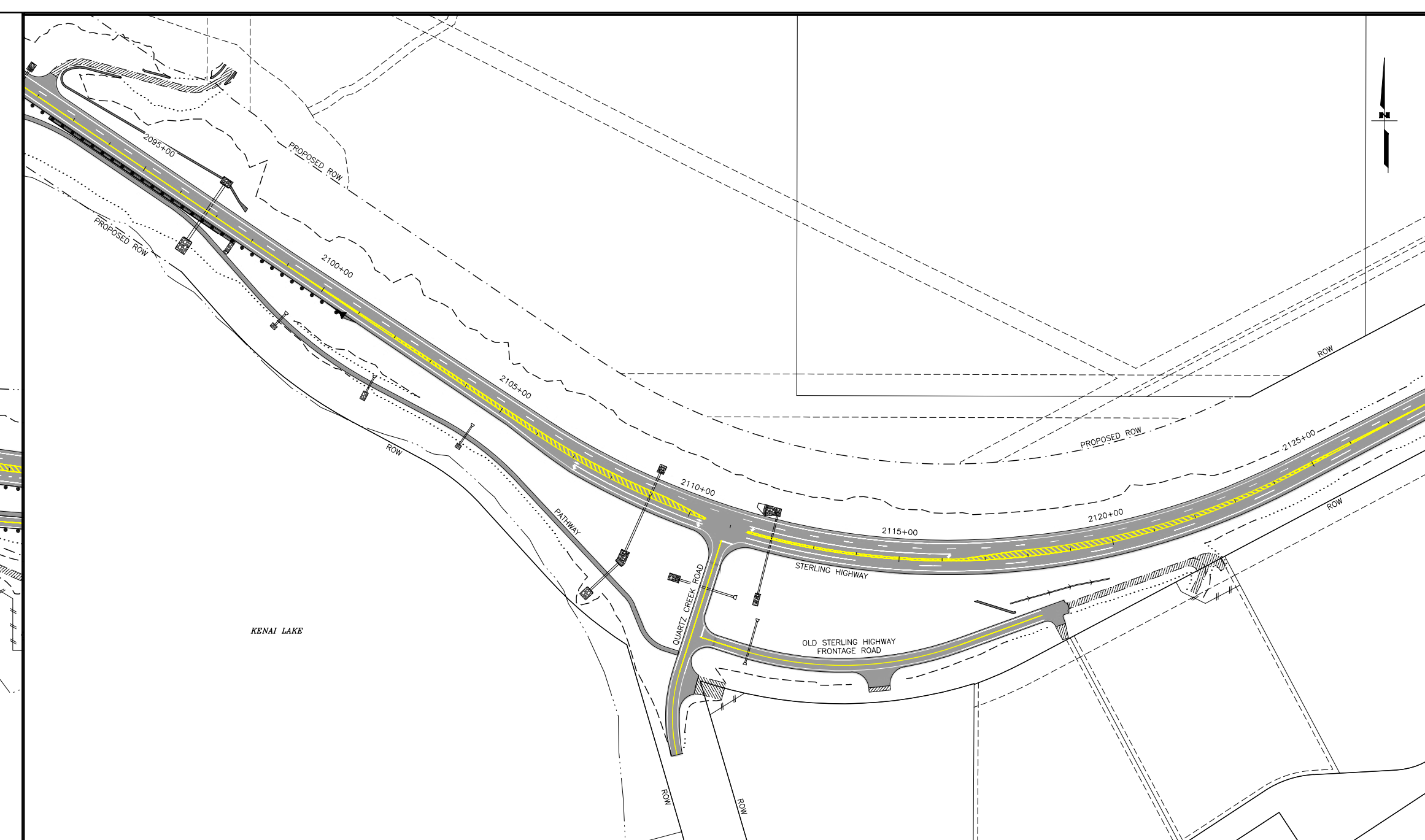


Phase 1B Overview Map

- » Work on Phase 1B and Phase 3 will overlap in 2025.
- » The excess material from Phase 1B (MP 45-47) will be used in Phase 3 construction.
- » Utility relocations are being finalized.
- » The project team will work with property owners on approaches and driveway designs throughout 2023.



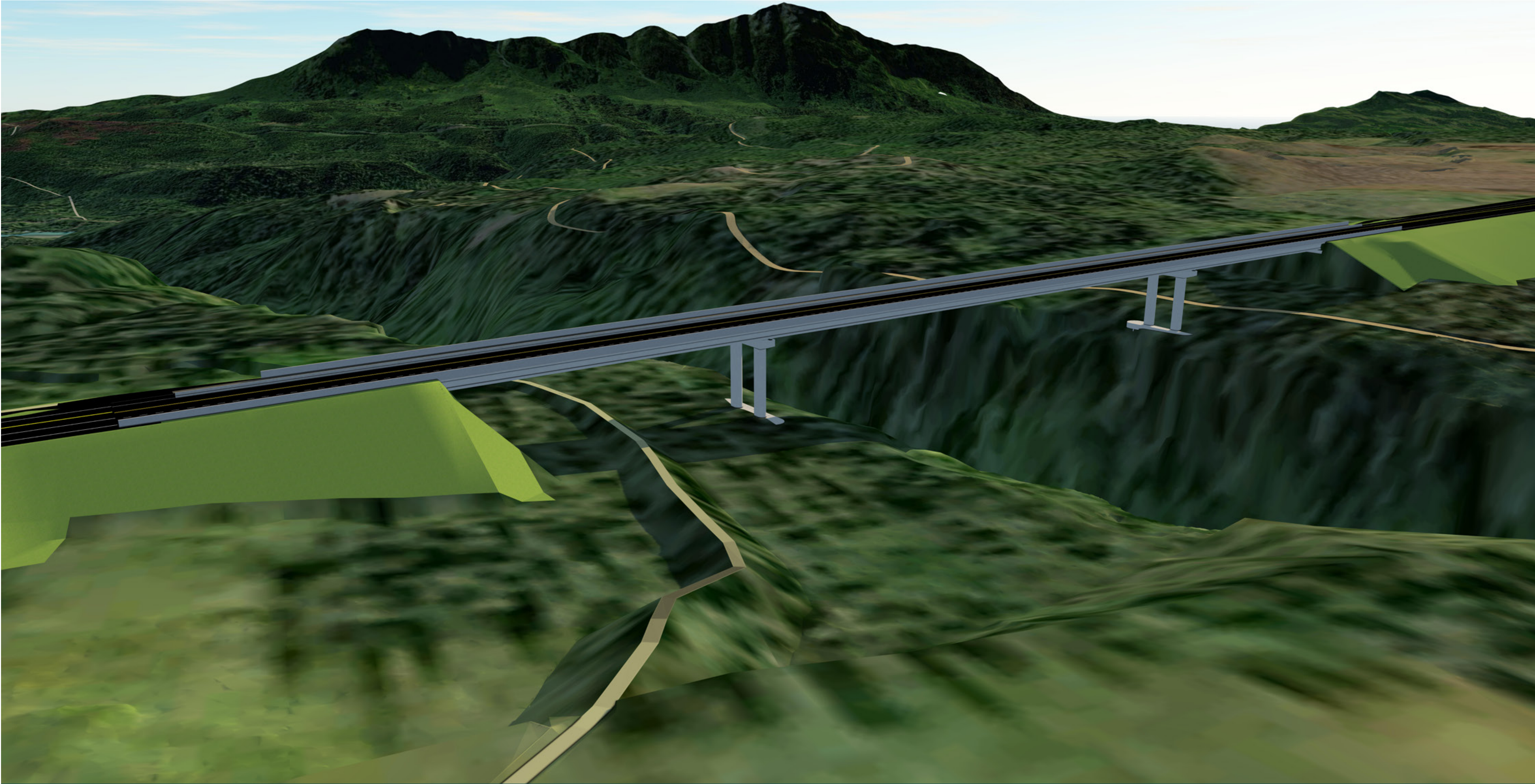
Intersection of the Old Sterling Highway and New Sterling Highway



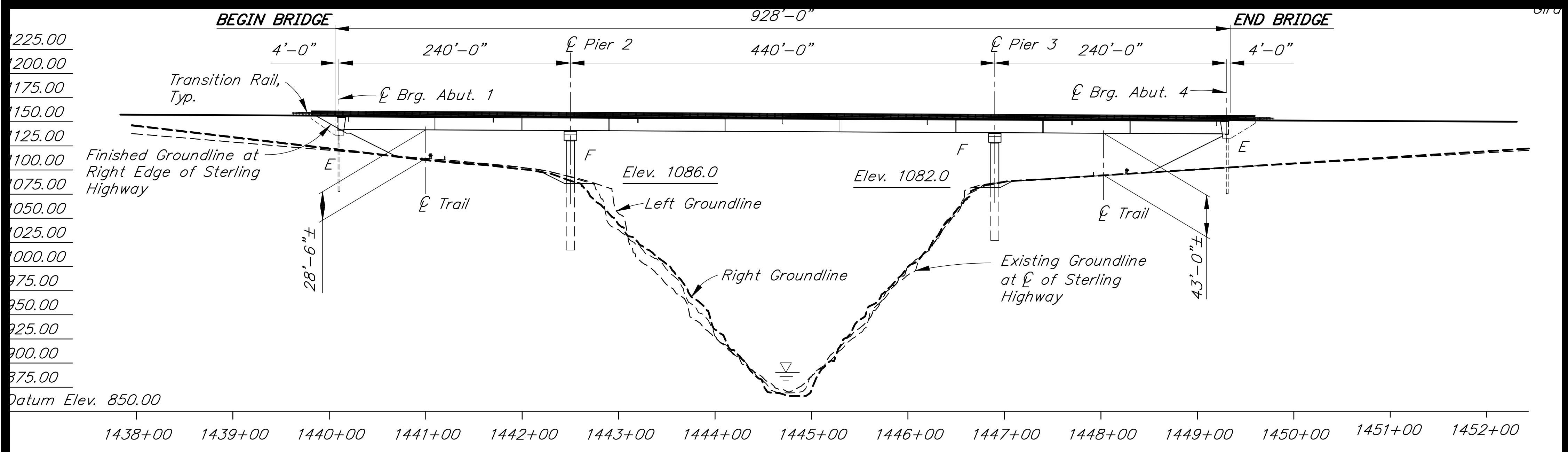
Intersection of the New Sterling Highway and Quartz Creek Road



Juneau Creek Bridge (Phase 2)



Steel Plate Girder Bridge concept looking north



August 2023 99% Design of Steel Plate Girder Bridge



West Abutment: Excavation and Preparation for Pier Construction (2023)



Access Road Construction to East Abutment (2023 - 2024)



**Award and Construct
the Juneau Creek
Bridge
(2024 - 2027)**

- » The Juneau Creek Bridge has reached 100% design.
- » Early work completed this year as part of Stage 4 included west abutment excavation and preparation for pier construction.
- » Phase 2 is anticipated to be awarded to the contractor by the end of 2023.

New Alignment (Phase 3)



Mobilized Equipment to Phase 3 (July 2023)



Rock Excavation and Road Construction to East Abutment



Installation of Drainage Culverts



Material from Phase 1B will be Trucked to Build up Final Road



Access to Materials Disposal Site

- » Work began in July 2023.
- » Rock excavation and embankment for temporary road access towards the east abutment of the future Juneau Creek Bridge is in process.
- » The final roadway grade for Phase 3 will need material from Phase 1B.

Timeline Details

- + **July 2023:** Access road began
- + **2023-2024:** Excavation/rock blasting/culverts/road construction
- + **2024:** Temporary road and access to bridge
- + **2025-2026:** Import material from Phase 1B to complete the roadway section
- + **2027-2028:** Final grading, pavement, signing, and striping

New Alignment (Phase 4)



Access to West Abutment of Juneau Creek Bridge



Finishing Slopes with Rip Rap and Final Stabilization



Blasting and Embankment is Mostly Complete



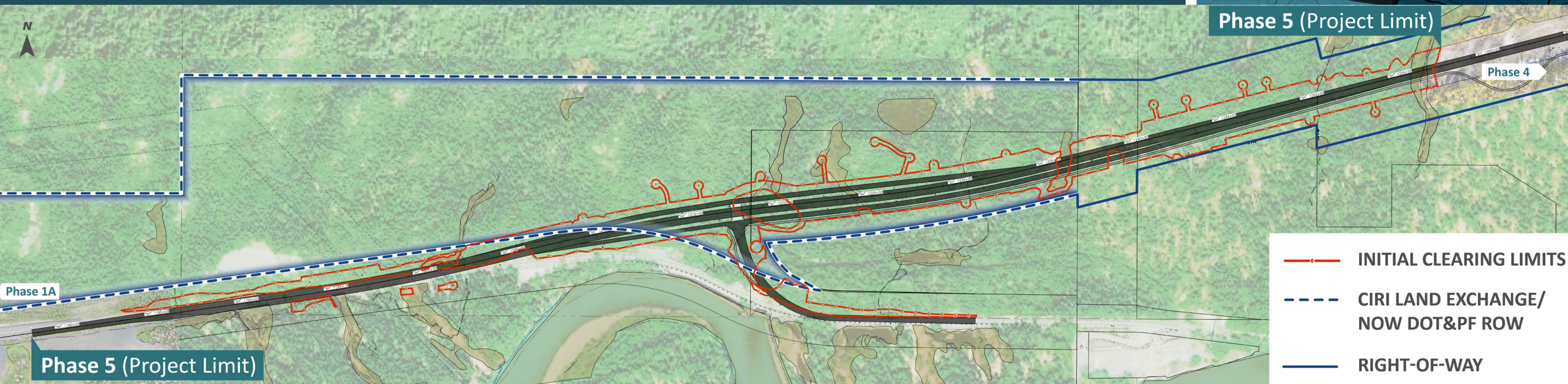
Phase 4 meets Phase 5 Clearing

- » Work began in fall 2022.
- » Blasting and embankment is mostly complete.
- » Temporary road access has been established up to the east abutment of the future Juneau Creek Bridge.
- » Most of the slopes have achieved final stabilization (seed and/or rip rap).
- » The final roadway grade for Phase 4 will need material from Phase 5.

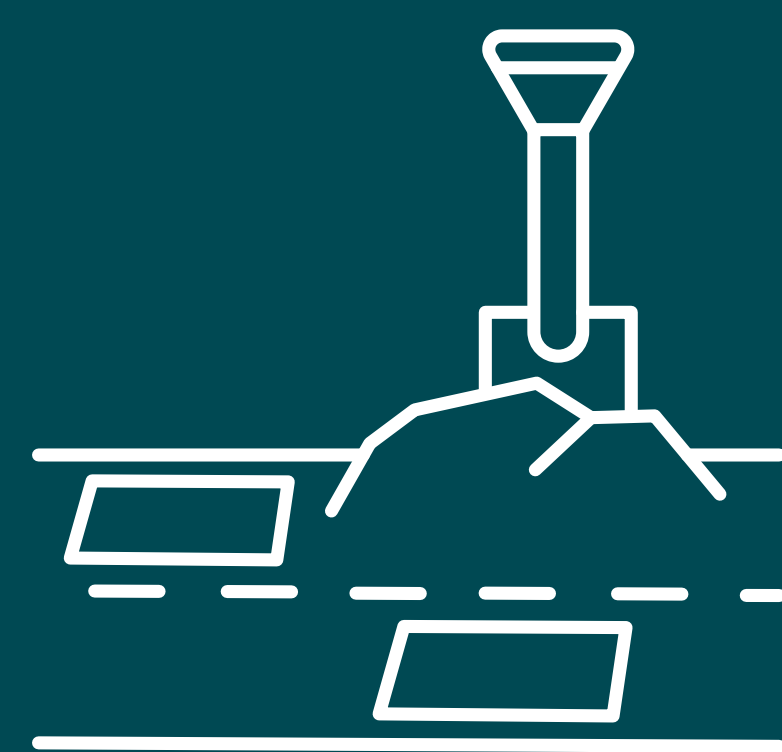
Timeline Details

- + **Fall 2022:** Access road began
- + **2023:** Excavation/ rock blasting/culverts/road construction
- + **2023-2024:** Temporary road and access to bridge
- + **2026-2027:** Import material from Phase 5 to complete the roadway section
- + **2027-2028:** Final grading, pavement, signing, & striping

Western Intersection (Phase 5)



Tree clearing began in April 2023.



Geotechnical exploration is being conducted July 2023 – spring 2024.



Cultural resource activities will occur summer 2023 – summer 2024.



Design of the new west intersection is underway, with 75% design anticipated in summer 2024.

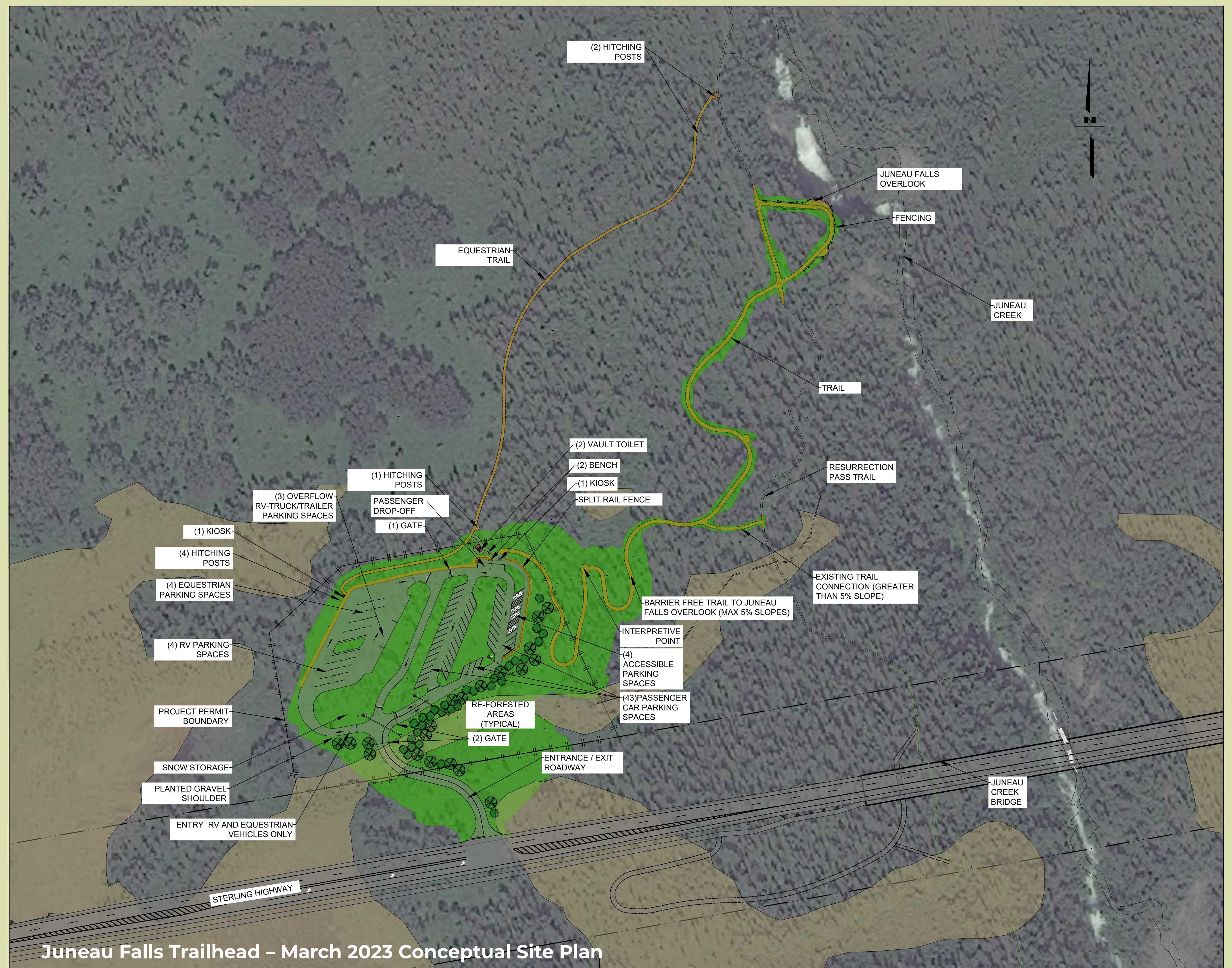
Recreation Access (Phases 3–6)



» **Bean Creek, Resurrection Pass, and Slaughter Gulch trails may have detours during bridge and roadway construction, but pedestrian access will remain open and alternate routes will be defined.**

» **Juneau Falls Trailhead and Juneau Falls Overlook:**

- The team continued coordination with the U.S. Forest Service (USFS) and developed a 30% design.
- The current focus is a more detailed look at the Juneau Falls Overlook. The team is working with the USFS on alternative layouts for an overlook with a view of the Juneau Creek Falls. A geotechnical exploration will occur this fall or early spring 2024 to further the preferred alternative design.



Juneau Falls Trailhead – March 2023 Conceptual Site Plan

Fieldwork & Construction Photos



Phase 3: Equipment lined up at the end of Langille Rd.



Phase 3: Entrance to the east side disposal and waste site.



Phase 3: Equipment working in the muck excavation zone



Phase 3: Fish pipe installation



Phase 4: Constructing access to the West Bridge Abutment



Phase 4: The West Bridge Abutment ready for equipment and materials.



Phase 4: Installation of an underdrain system on the west side of Juneau Creek

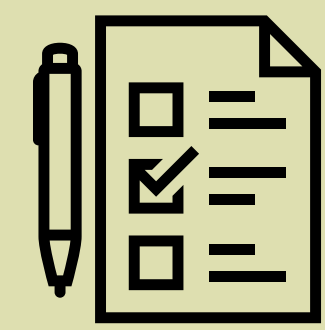


Phase 4: Location of the on and off ramp within parcel 395 with Skilak Glacier in the background.



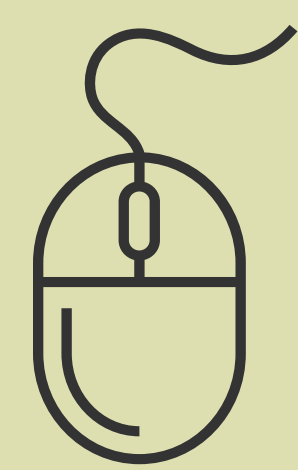
Phases 4 & 5: Transition from the Phase 4 (gravel surface) to Phase 5 (cleared area). A screening plant is setup for material production and sorting. Geological and Archeological crews working in Phase 5.

Comment & Contact Us



Written Comment:

Fill out a comment sheet at this meeting.



Visit the website:

sterlinghighway.net

Design Questions

Jonathan Tymick, P.E.
Project Manager
907-269-0453
Jonathan.Tymick@alaska.gov

Construction Questions

Shaun Combs
Project Engineer
907-595-2009
Shaun.Combs@alaska.gov

-----> **Know Before You Go** <-----



www.511.alaska.gov
for road conditions